



VOL. 3 ISSUE 3 • JULY 2022

MISSOULA COUNTY PUBLIC WORKS

Official Newsletter

Saying Farewell to a Beloved Friend and Co-Worker!

Congratulations on your Retirement, Jerry!

Jerry Jochinsen retired from the Public Works Road Division after 15 years of service! He started working for the county in February 2008 and sprayed down his last pile of chips on June 28, 2022.

Great benefits is what brought Jerry to work for the county and even better people to work with is what kept him there! Those two things were his favorite parts about coming to work everyday, 'The crew gets along really well,' Jerry said.

Jerry's never one to shy away from fun and telling the stories about his adventures was something he liked to do! Whether the tales be about fishing, concerts with his wife and friends, or the great vacations he'd take, Jerry knows how to enjoy life! No doubt Jerry's escapades are about to get more plentiful, and hopefully even more spontaneous, as he's now living on retirement-time!

Congratulations Jerry! Thank you for your 15 years of dedicated service to the citizens of Missoula County! We hope nothing but the best for you in your retirement!

In this issue:

Jerry Jochinsen Retires

PAGE 01

Director's Highlights

PAGE 02




Road Division - MCPW
helps with Carbon County
Flooding

PAGE 03

Building Division -
Health in the Work Place

PAGE 04

Follow Us

-  [missoulacounty.us/
publicworks](https://missoulacounty.us/publicworks)
-  [MsIaCoPubWorks](#)
-  [MsIaCoPubWorks](#)
- 406.258.3701 Building
- 406.258.4753 Roads
- mcpw@missoulacounty.us
- 6089 Training Drive
- Missoula, MT 59808



'But seriously guys, that
fish was THIS big!'



'Did I tell you about that time I...
No?? So get this...'

DIRECTOR'S HIGHLIGHTS

SHANE STACK, P.E.

Public Infrastructure

Construction

NEWS

Shane Stack started as Director of Public Works on April 1, 2019, after nearly 23 years with the Montana Department of Transportation, most recently as the Missoula District Preconstruction Engineer. At MDT, he planned, implemented and oversaw several high-profile, multimillion-dollar engineering projects in the Missoula area.



It's already mid-July, and I'm wondering where summer has gone. We're seeing a large number of building permits, more than any previous summer. Kudos to the Building staff for working hard to keep up with the demand, while also being down one person, and inspectors for staying ahead of the curve and providing inspections within one day of the request. The Building Division has been coordinating with the Health Department and Community and Planning Services to streamline the permitting process. They will continue those efforts in order to keep improving the process. The Road Division has completed dust abatement without a contractor for the first time ever. Bids for dust abatement were significantly higher than what was budgeted, so staff modified a water truck, rented tanker trailers and completed the work on time and on budget themselves. We plan to continue doing this in house in the future. Petty Creek Road was chip sealed using Bridge and Road Safety Accountability Act (BARSAA) funding. This is our second year of completing chip seals that help add longer pavement life and are more affordable. Expect more chip seals to come. The Loiselle Lane railroad crossing was resurfaced in partnership with MRL. It included paving a short section of roadway on both sides of the track. More crossing surfaces in the Lolo area are planned for this summer. The budget for this year has been submitted but not yet approved. Additional paving work is contingent upon additional funding. We'll know more in August and September. Regardless of the budget, we do plan on making small improvements on Highton Street in East Missoula, Allomont Drive in Lolo, and a short section of Old Hwy 10 just west of Pulp Mill Road. Through the use of an RSID, the residents along 29th Avenue and North Avenue will have both roadways reconstructed, paved and completed in July and August. The road crew also plans to do small parking lot improvement at the Big Sky Park little league fields, funded through the Parks Trails Open Lands department but constructed by Public Works staff. This is another example of great partnerships at Missoula County. Growth in Missoula County has an impact on infrastructure. Public Works is focused on keeping up with increasing demands, however the budgets don't grow as fast as they need to. Last year required the purchase of three used plow trucks from Salt Lake County to replace two trucks that had cracked frames. The current plan is to evaluate trucks they will auction off this year, which are in better shape than most of our plow trucks, and purchase what we can as they will be an upgrade for Missoula County. The used equipment will cost around 1/3 of the cost of a new plow truck, so for the price of two new trucks, we can purchase six used trucks that will provide a long useful life. I mention this to share that we are being fiscally responsible with the taxpayer's money and that the infrastructure needs are much greater than the tax revenues generated. The sewer and water systems that are managed by Public Works are going to receive more than \$8M in ARPA funding for needed improvements. We continue to work with HDR to plan the needs of the systems, and given the growth, most of our efforts are focused on Lolo. Those improvements will be constructed over the next several years. I want to say thank you again to the Public Works team for the hard work and dedication. The public is fortunate to have all of you as employees at Missoula County.

As always, wishing you the best.

ROAD DIVISION

MCPW HELPS WITH FLOODING EFFORTS IN CARBON COUNTY - ERIK DICKSON

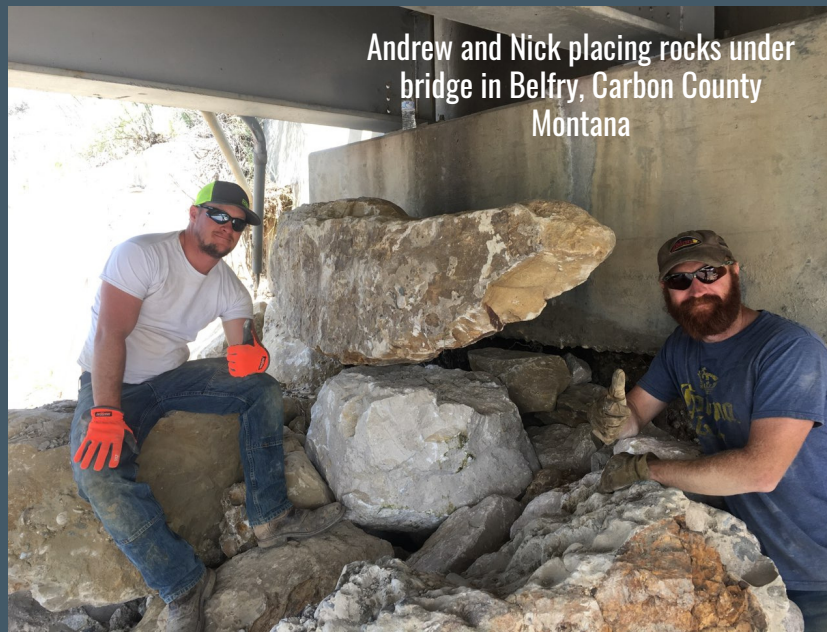
When Carbon County experienced epic flooding in June, their road crews provided immediate response to things that they could control or fix. Bridges, roads, culverts, irrigation ditches – every type of infrastructure they maintain was impacted somewhere at some point. Nearly 70 people had to be evacuated by helicopter due to the impacts. The Western Montana Incident Management Team aided with the flood fight effort and Carbon County ultimately requested help directly from the Missoula County Public Works Department through that working relationship. I know that any of our road crew would have gone to help. Nick, Andrew, and Jason were called in to aid with stabilizing a bridge (see photo above). Through their hard work 20 families in Carbon County were back on track during this atypical flooding event and were able to continue their normal lives in an area completely reliant upon agricultural livelihoods.

Carbon County staff delivered materials while Nick and Andrew worked from the ground to direct Jason's work in the excavator. At one point, the excavator was just out of reach and clearance to place one particular rock. It wasn't where Nick and Andrew wanted it and I thought they would accept that as a best effort and move on. But then I watched them use one 3,000-pound rock held in the excavator's bucket to push the questionable 4,000-pound rock into place, ending up where they wanted it directly under the excavator that was on top of the bridge 8 feet above. Although completely unintentional, a couple of hours later they took a few minutes and got one rock to balance on top of another on the order of a few square inches. About 5 hours into the mid-90's heat of the second day, that moment of fun was well deserved. I've seen our staff do some things before, but those two efforts were impressive.

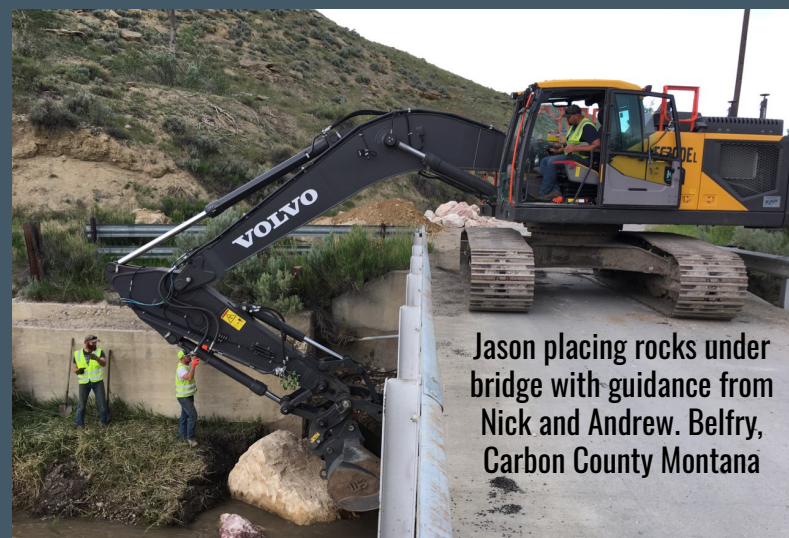
In addition to Nick's and Andrew's ability to visualize where things were fitting and then direct Jason to get those big rocks in place, they were placing whatever rocks they could manage by hand while crawling over and around rocks under the bridge. Their skill in executing a loosely organized plan while working under the bridge, their trust in Jason's control of the excavator, Jason's skill, and his trust in them to guide his work where he couldn't see was an honor to watch. These three guys were able and willing to head across the state with a days' notice not knowing what they were being asked to do or under what conditions they'd be

doing it. They only knew that Carbon County was hurting. After their regular four day/forty-hour work week, they drove 8 hours to Red Lodge, slept on the floor in an elementary school classroom, worked two 15-hour days in Belfry, then drove another 8 hours home on Sunday in a truck that's not designed for cross-country travel. Then, they showed up at 6:00 on Monday morning to get back to their regular schedule like nothing happened.

I've worked with these three for years, and I was still impressed with their efforts on the Clark's Fork Yellowstone River near Belfry. They represented Missoula County well and their efforts were greatly appreciated by the folks in both Carbon County and Missoula County.



Andrew and Nick placing rocks under bridge in Belfry, Carbon County Montana



Jason placing rocks under bridge with guidance from Nick and Andrew. Belfry, Carbon County Montana

WELCOME TO THE BUILDING DIVISION

Mental Health and Physical Health in the Work Place

We all know that stress tends to get higher as work loads get heavier. It's no different in the Building Division. As permit counts rise, more daily inspections are requested that cover the 2600 square miles that is Missoula County. It also means more phone calls, more emails, more permit processing, plan reviewing and general question answering from office staff. Phew! It's a lot! So what does the Building staff do at the end of the day to keep from snapping at husbands, wives, and kids when they get home? They take a few minutes to decompress and PLANK IT OUT!

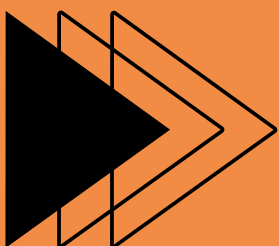


We all know stress can not only affect your mental health but it can have adverse affects on your physical health as well. CPR and first aid training is offered to employees that wish to take it so that they are always prepared, and can come in very helpful, especially for inspectors that are often in more remote areas.



NEW
NEW
NEW
NEW

UPDATE



EFFECTIVE SEPTEMBER 1, 2022, IN ACCORDANCE WITH RESOLUTION 2022-070 SIGNED JUNE 9, 2022, THE BUILDING DIVISION WILL BE IMPOSING THE FOLLOWING CHANGES:

- INCREASED BUILDING PERMIT FEES
- UPDATE MONTHLY INTERNATIONAL CODE COUNCIL BUILDING VALUATION DATA IN APPENDIX C
- INCREASE FEE'S ANNUALLY BASED ON THE CONSUMER PRICE INDEX
- ADOPT THE FOLLOWING DEFINITIONS: FINISHED AND UNFINISHED BASEMENTS, SIMPLE VS COMPLEX HOME VALUATIONS
- ELIMINATE THE FOOTING AND FOUNDATION WAIVER
 - ELIMINATE THE AGRICULTURAL EXEMPTION
- SET THE SPECIAL INSPECTIONS/CONSULTATION RATE FOR THE DIVISION AT \$75 PER HOUR
- SET THE PLAN REVIEW RATE AT 35% OF THE BUILDING FEE